

# THE RIPOSO

3 BED | 2.5 BATH | 2-CAR ATTACHED GARAGE | ~2,705 SQ/FT



RIPOSO RAISED RIVER COTTAGE



RIPOSO RIVER CRAFTSMAN



RIPOSO UPCOUNTRY MILL HOUSE



*MOVING YOUR DREAMS FORWARD*

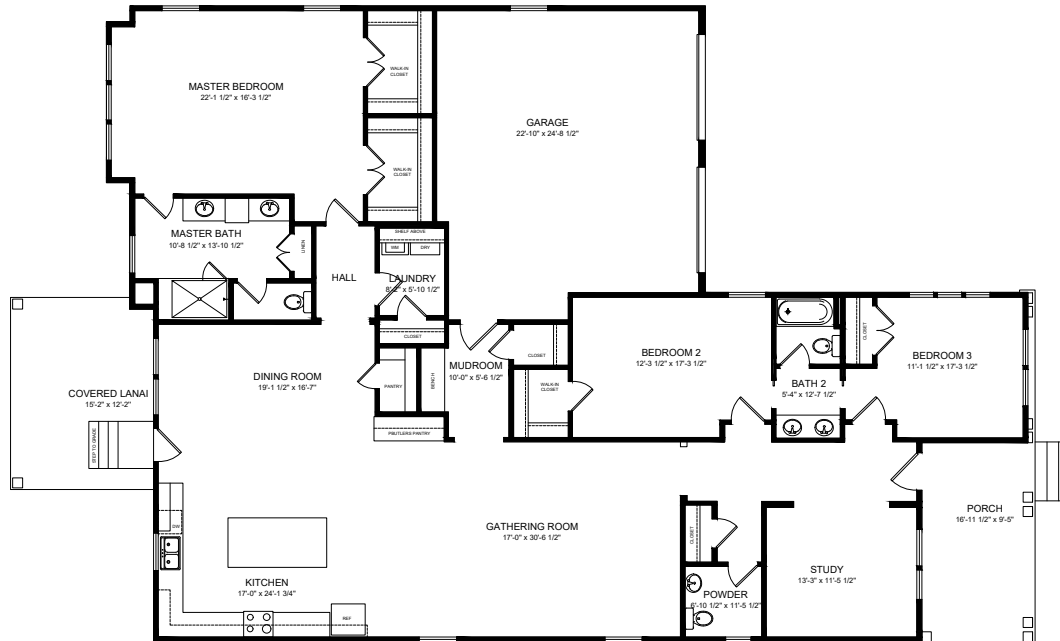
[avenciahomes.com](http://avenciahomes.com)



# THE RIPOSO

3 BED | 2.5 BATH | 2-CAR ATTACHED GARAGE | ~2,705 SQ/FT

## MAIN LEVEL



## ABOUT THE RIPOSO

This charming home is flooded with light and bright spaces, punctuated by ample storage. Each room is well thought out, flowing into the grand and shared spaces with bold strokes. Notice the sizeable laundry area, the modern, open and convenient kitchen location, expansive family areas, and spacious outdoor living. The private owner's suite creates an oasis separate from the main living area. This ranch plan is perfect for the downsizer or growing family.



*READY TO LOVE WHERE YOU LIVE?*

Contact our onsite broker today!

*Anthony Boucher | [aboucher@avenciahomes.com](mailto:aboucher@avenciahomes.com) | 704.972.8016*



\*All pricing, options, and availability subject to change. Renderings are artist interpretations. Photos may show optional features. See new home sales agent for more details. Revised 07.26.2024