

# THE BYFORD

3 BED | 2.5 BATH | 2-CAR ATTACHED GARAGE | ~2,663 SQ/FT



BYFORD RAISED RIVER COTTAGE



BYFORD RIVER CRAFTSMAN



**MOVING YOUR DREAMS FORWARD**

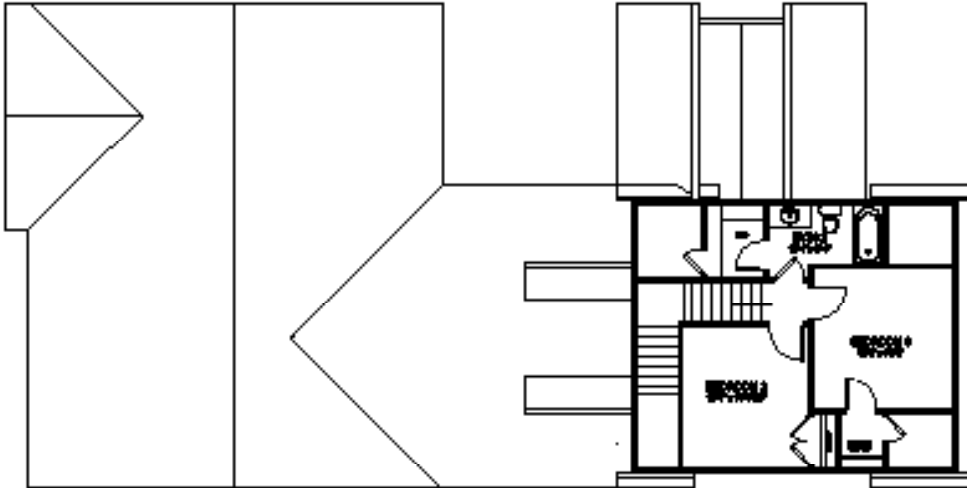
[avenciahomes.com](http://avenciahomes.com)



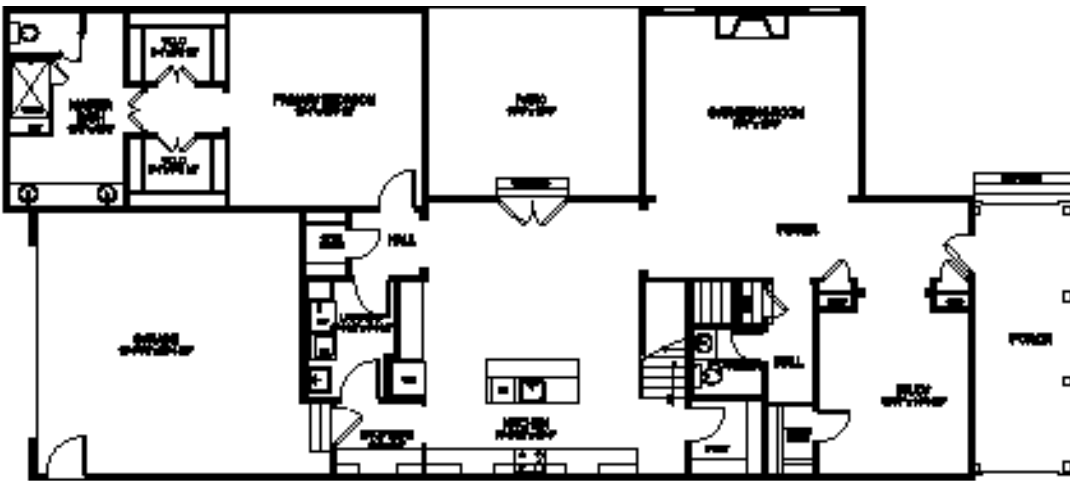
# THE BYFORD

3 BED | 2.5 BATH | 2-CAR ATTACHED GARAGE | ~2,663 SQ/FT

## UPPER LEVEL



## MAIN LEVEL



## ABOUT THE BYFORD

With thoughtful design we created a plan to integrate indoor and outdoor living. Our courtyard series is specifically designed to connect you to nature from nearly every room in the house. Now add a kitchen and gathering spaces that match your desire for open, casual, and stylish living and Home will become your favorite place. From the drop zone off the garage, to an in-home office, plus the intuitive design features Avencia Homes is proud to include together make the Byford the perfect New Home for you and your Family.



## READY TO LOVE WHERE YOU LIVE?

Contact our onsite broker today!

*Anthony Boucher* | [aboucher@avenciahomes.com](mailto:aboucher@avenciahomes.com) | 704.972.8016



\*All pricing, options, and availability subject to change. Renderings are artist interpretations. Photos may show optional features. See new home sales agent for more details. Revised 07.26.2024